



CONSTRUCTION

P R O F I L E

INTRODUCTION

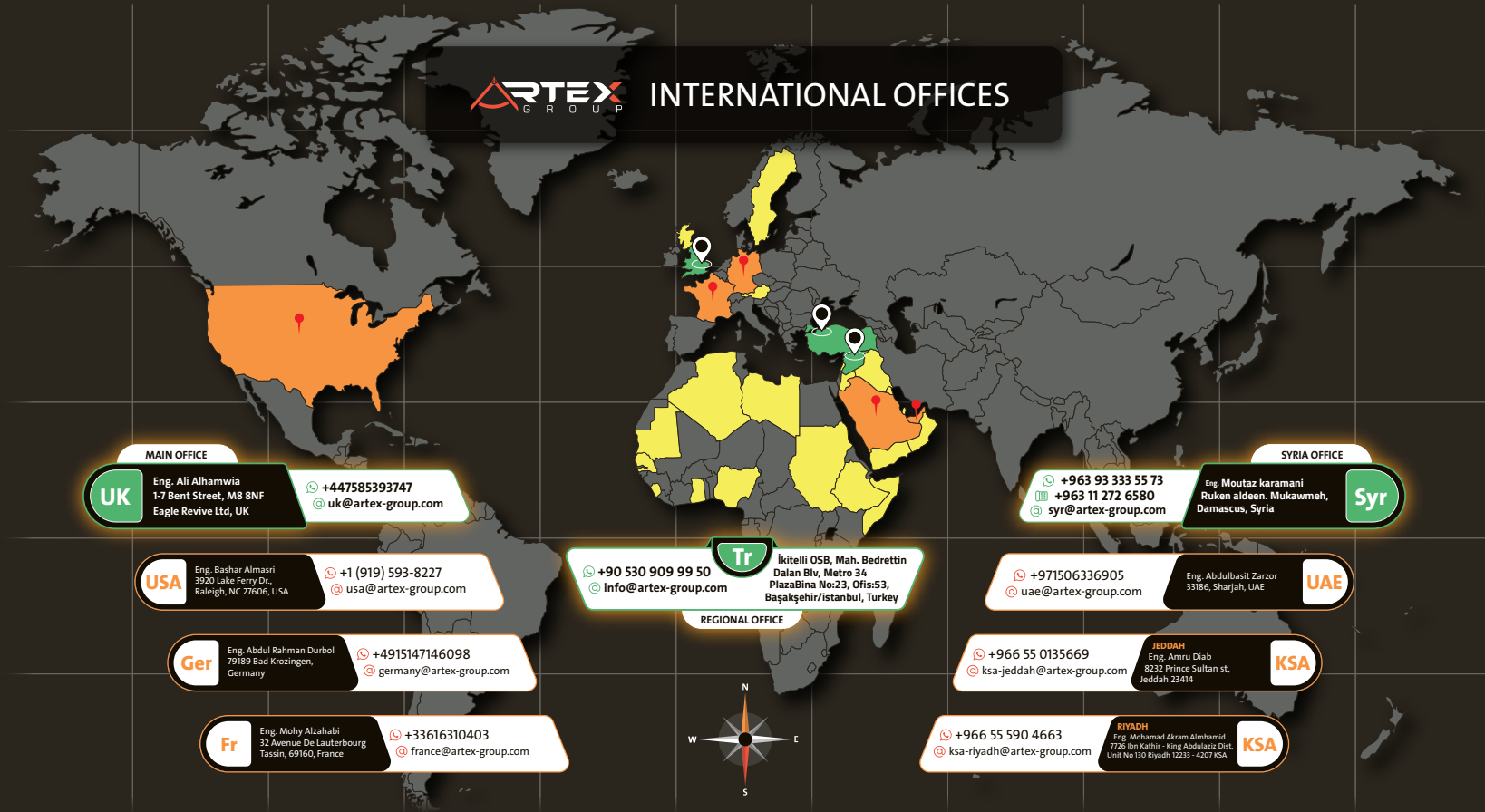
ARTEX, an engineering and construction company, operates out of its main office in the United Kingdom and a regional office in Istanbul, TÜRKİYE.

We started in 1983 and are active in Europe, TÜRKİYE, Africa, and throughout the Middle East. Our activities include engineering design, supervision, and execution of general construction. We specialize in structural support, rehabilitation, interior design, suburban residences, villas, and multi-storey buildings.

Furthermore, we have experience in sustainable solutions and the design and implementation of different service facilities.

Our technical staff is composed of professional consulting engineers in a variety of disciplines.

We are distinguished by efficient project execution, quality, elegance, and attention to details. We apply the PMP process, REVIT & BIM, Green Building requirements, and Smart Home techniques.





PARTNER

HALIT SAVAFOĞLU

MSc Computer Engineering
Chief Technology Officer (CTO)



PARTNER

EMAD ALHAJ ALI BEK

Consultant Civil Engineer/ Project Manager



PARTNER

MHD RASHAD ALSHOWEKY

Consultant Civil Engineer / Director Manager



PARTNER

ALAADDIN ALMASRI

MSc of Architecture / Technical Manager



PARTNER

ERKAN AYYILDIZ

M.Sc. REE
Director of Power Electrical Engineering Department



ENG. MOUTAZ KARAMANI

Syria Projects Manager



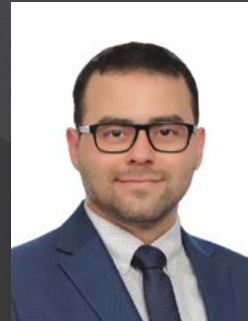
ENG. ALI ALHAMWIA

UK Projects Manager



IYAD AL-NAJJAR

BS. of Architecture / Executive Architect



EMİR ARKAN

BIM ARCHITECT



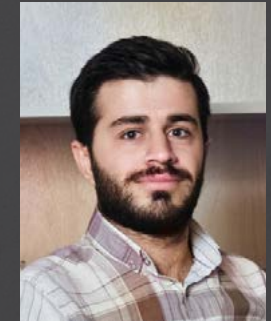
ADNAN AL-KURDI

Director of the Mechanical
Engineering Department



FERAS MARAI

Structural Design Department Manager
(Supporting Specialist)



OMAR ALENZAWI

Architect / Interior Designer

CONTENTS

External Wall Details

06

Hospital Container

14

Hafif Çelik

15

Prefabrik

16

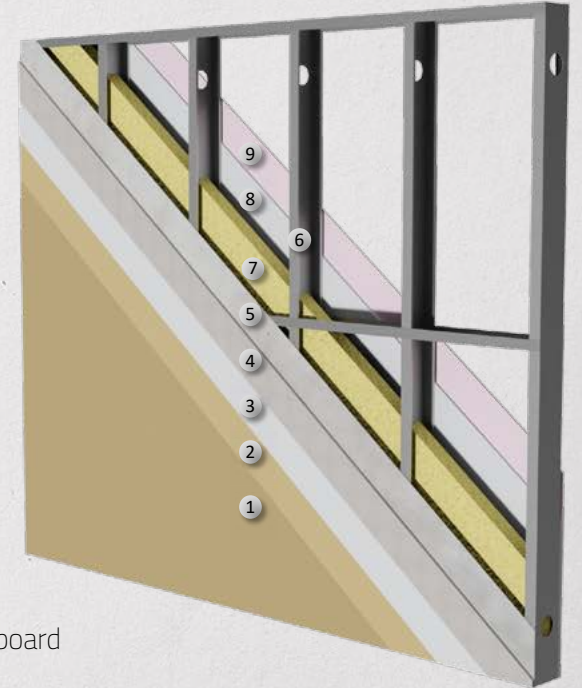


External Wall Details



Materials layers

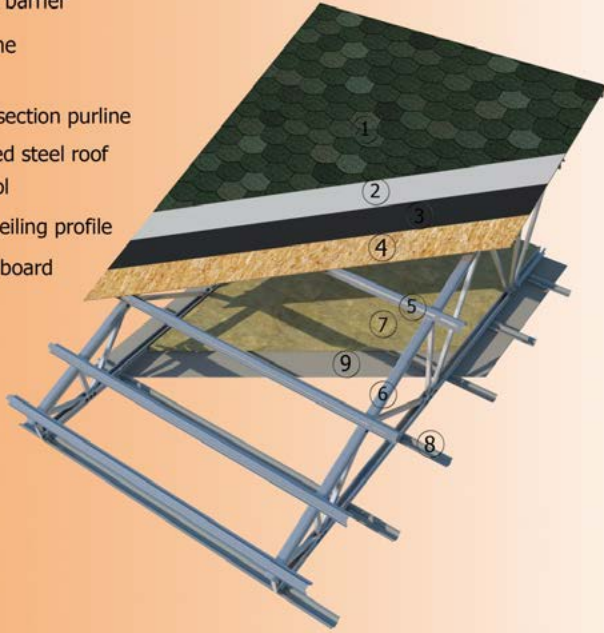
1. Last layer external paint
2. External surface paint
3. Exterior primer painting
4. A-1 fire resistant fibercement board
5. M Profile
6. Vapour barrier
7. Galvanized steel profile
8. Rockwool insulation
9. Gypsum board
10. Fire rated Gypsum board



Materials layers

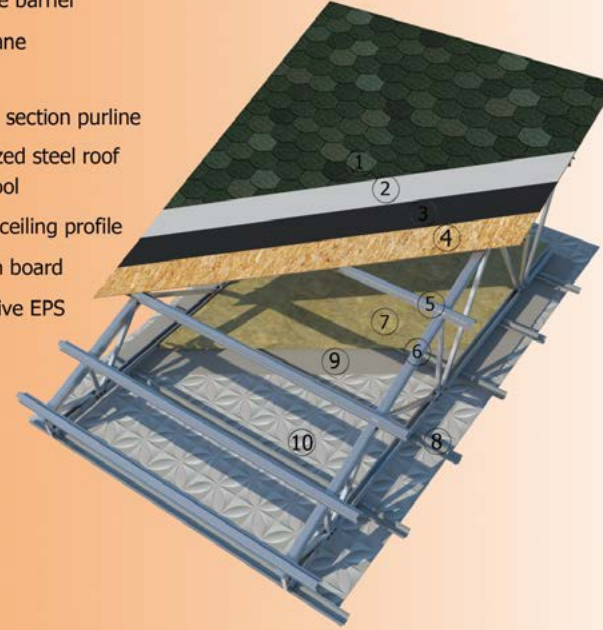
1. Last layer external paint
2. External surface paint
3. Exterior primer painting
4. A-1 fire resistant fibercement board
5. Vapour barrier
6. Galvanized steel profile
7. Rockwool insulation
8. Gypsum board
9. Fire rated Gypsum board

- ① Shinglee
- ② Moisture barrier
- ③ Membrane
- ④ OSB
- ⑤ Omega section purline
- ⑥ Galvanized steel roof
- ⑦ Glasswool
- ⑧ Omega ceiling profile
- ⑨ Gypsum board



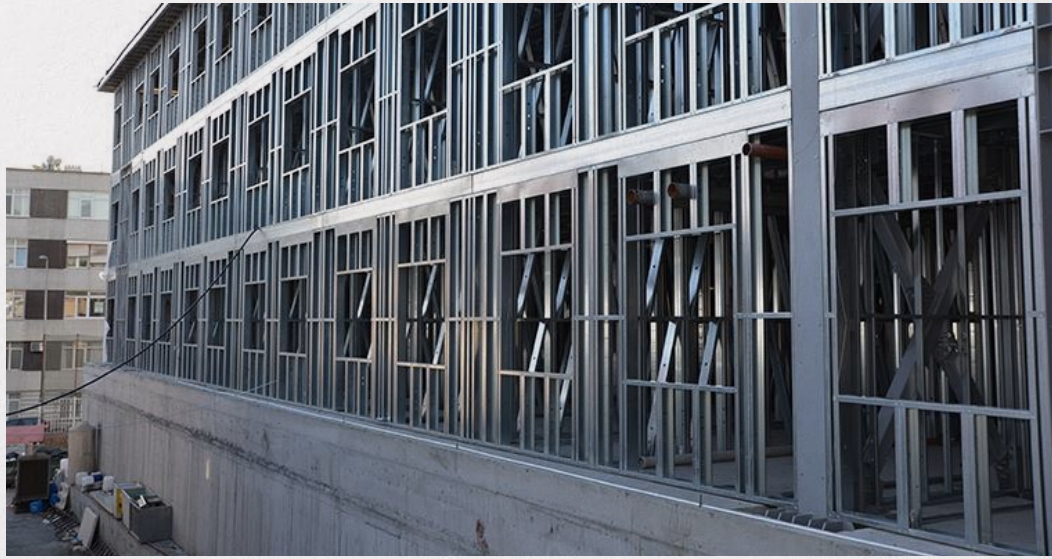
- ① Shinglee
- ② Buhar dengeleyici
- ③ Membran
- ④ OSB
- ⑤ Omega aşık
- ⑥ Galvanizli çelik makas
- ⑦ Camyünü
- ⑧ Tavan omegası
- ⑨ Alçıpan

- ① Shinglee
- ② Moisture barrier
- ③ Membrane
- ④ OSB
- ⑤ Omega section purline
- ⑥ Galvanized steel roof
- ⑦ Glasswool
- ⑧ Omega ceiling profile
- ⑨ Gypsum board
- ⑩ Decorative EPS



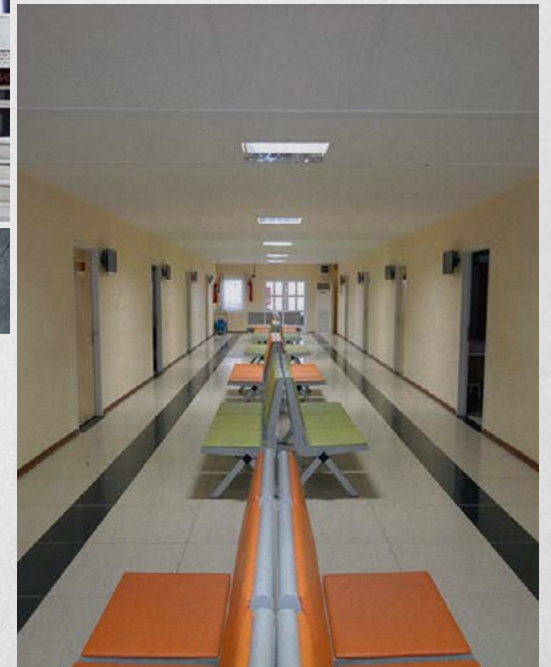
- ① Shinglee
- ② Buhar dengeleyici
- ③ Membran
- ④ OSB
- ⑤ Omega aşık
- ⑥ Galvanizli çelik makas
- ⑦ Camyünü
- ⑧ Tavan omegası
- ⑨ Alçıpan
- ⑩ Dekoratif EPS













Hospital Container



Ghana Broject



Hafif Çelik



Prefabrik



OUR CLIENTS



INTERNATIONAL OFFICES



Main Office: UK

Eng. Ali Alhamwia
2 Plumley Rd, Handforth,
Wilmslow, SK9 3RR, UK
uk@artex-group.com
MOB. +447585393747

Regional Office: Türkiye

İkitelli OSB, Mah. Bedrettin
Dalan Blv, Metro 34 Plaza
Bina No:23, Ofis:53,
Başakşehir/istanbul, Turkey
www.artex-group.com
info@artex-group.com
MOB +90 530 909 99 50

Syria Office:

Ruken aldeen . Mukawmeh,
Damascus, Syria
Eng. Moutaz karamani
syr@artex-group.com
MOB +963 93 333 5573
Office +963 11 272 6580

artexeng company/artexeng

ARTEX OFFICES WORLDWIDE

Germany

Eng. Abdul Rahman Durbol
MOB. +4915147146098
79189 Bad Krozingen, Germany
germany@artex-group.com

UAE

Eng. Abdulbasit Zarzor
MOB. +971506336905
33186, Sharjah, UAE
uae@artex-group.com

KSA, Jeddah

Eng. Amru Diab
8232 Prince Sultan st, Jeddah 23414
MOB. +966 55 0135669
ksa-jeddah@artex-group.com

USA

Eng. Bashar Almasri
MOB. +1 (919) 593-8227
3920 Lake Ferry Dr., Raleigh,
NC 27606, USA
usa@artex-group.com

France

Eng. Mohy Alzahabi
MOB. +33616310403
32 Avenue De Lauterbourg
Tassin, 69160, France
france@artex-group.com

KSA, Riyadh

Eng. Mohamad Akram Almhamid
MOB. +966 55 590 4663
ksa-riyadh@artex-group.com
7726 Ibn Kathir - King Abdulaziz Dist.
Unit No 130 Riyadh 12233 - 4207 KSA