



SUPPORTING  
REHABILITATION &  
PROFILE

# INTRODUCTION

ARTEX, an engineering and construction company, operates out of its main office in the United Kingdom and a regional office in Istanbul, TÜRKIYE.

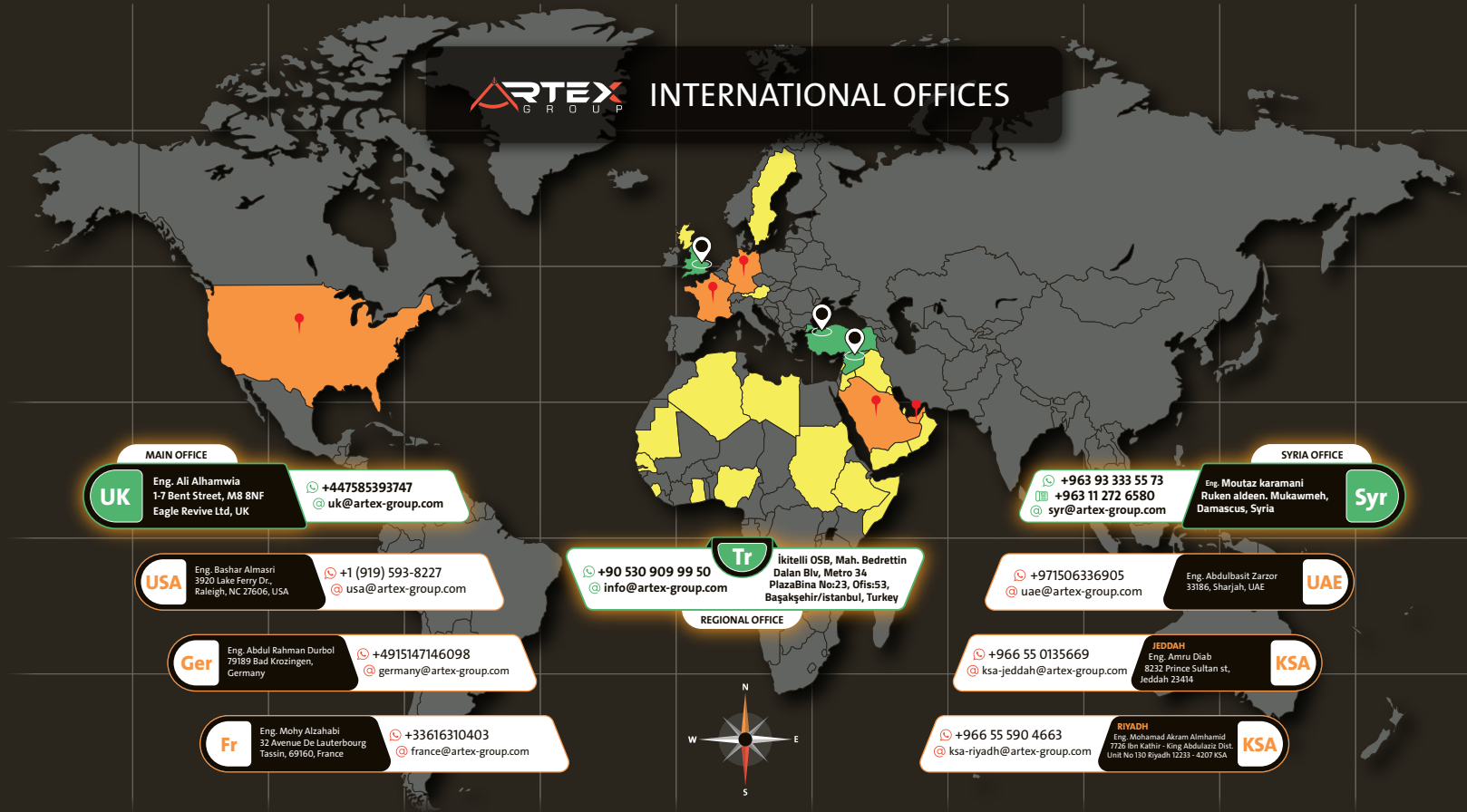
We started in 1983 and are active in Europe, TÜRKIYE, Africa, and throughout the Middle East. Our activities include engineering design, supervision, and execution of general construction. We specialize in structural support, rehabilitation, interior design, suburban residences, villas, and multi-storey buildings.

Furthermore, we have experience in sustainable solutions and the design and implementation of different service facilities.

Our technical staff is composed of professional consulting engineers in a variety of disciplines.

We are distinguished by efficient project execution, quality, elegance, and attention to details. We apply the PMP process, REVIT & BIM, Green Building requirements, and Smart Home techniques.

● Main offices ● Branch offices ● Projects





PARTNER

HALIT SAVAFOĞLU

MSc Computer Engineering  
Chief Technology Officer (CTO)



PARTNER

EMAD ALHAJ ALI BEK

Consultant Civil Engineer/ Project Manager



PARTNER

MHD RASHAD ALSHOWEKY

Consultant Civil Engineer / Director Manager



PARTNER

ALAADDIN ALMASRI

MSc of Architecture / Technical Manager



PARTNER

ERKAN AYYILDIZ

M.Sc. REE  
Director of Power Electrical Engineering Department



ENG. MOUTAZ KARAMANI

Syna Projects Manager



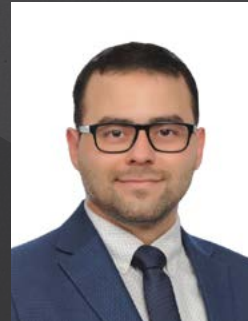
ENG. ALI ALHAMWIA

UK Projects Manager



IYAD AL-NAJJAR

BS. of Architecture / Executive Architect



EMİR ARKAN

BIM ARCHITECT



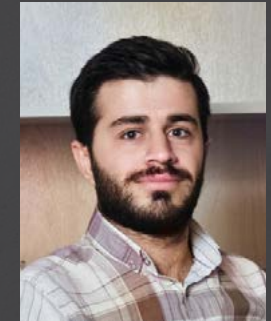
ADNAN AL-KURDI

Director of the Mechanical  
Engineering Department



FERAS MARAI

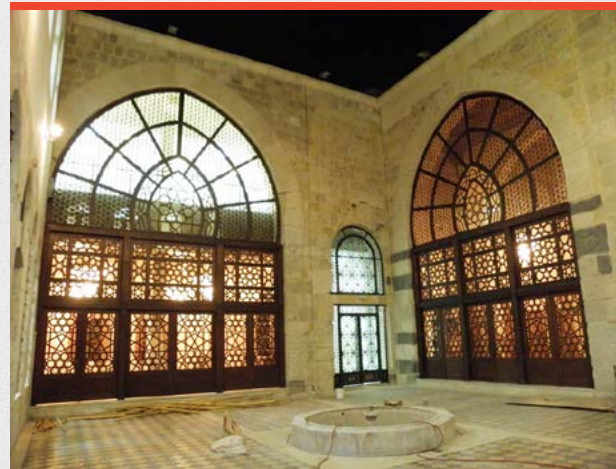
Structural Design Department Manager  
(Supporting Specialist)



OMAR ALENZAWI

Architect / Interior Designer

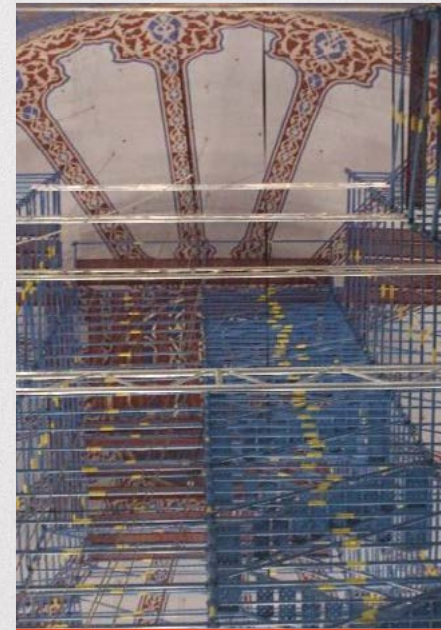
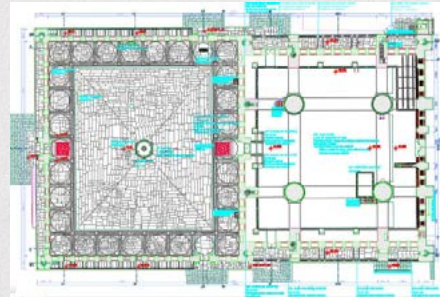
# ZAHIRIYYA LIBRARY IN DAMASCUS IN COOPERATION WITH SARH COMPANY



## THE BLUE MOSQUE (ISTANBUL, TURKEY)

### RESTORATION AND REHABILITATION WORKS OF THE BLUE MOSQUE:

- The works of strengthening the mosque.
- Dismantling and reconstructing minarets.
- Restoration of inscriptions and decorations.
- Repairing cracks in domes.
- Tile restoration in interior walls.
- Rehabilitation of the public site surrounding the mosque.
- Establishing ablution and modern toilets.
- Restore the building to it's original condition.



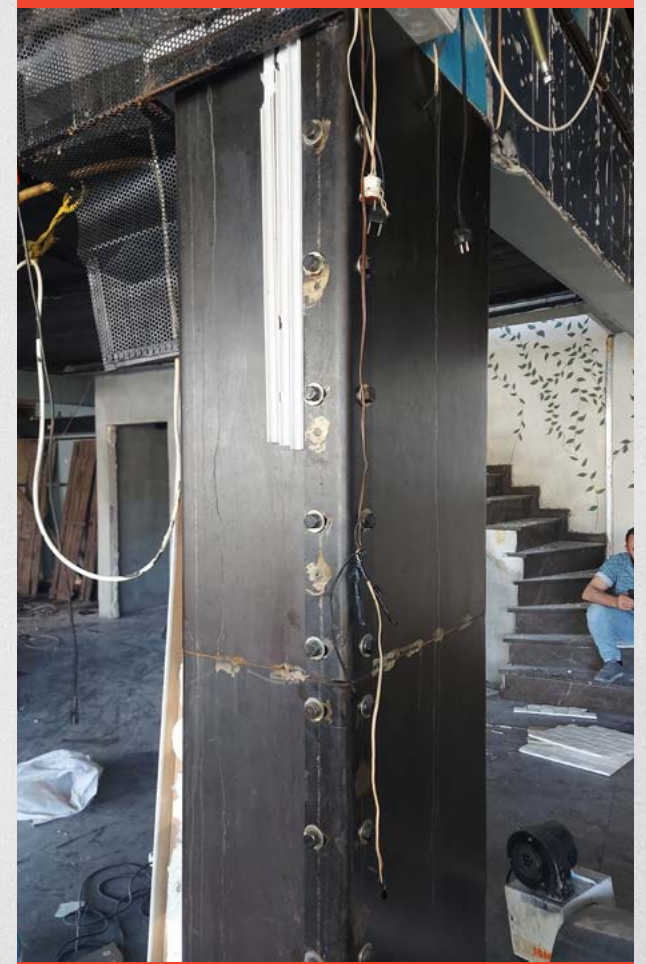
# QUATLY FAMILY HOUSE IN DAMASCUS IN COOPERATION WITH SARH COMPANY



# VARIOUS PROJECTS



# VARIOUS PROJECTS

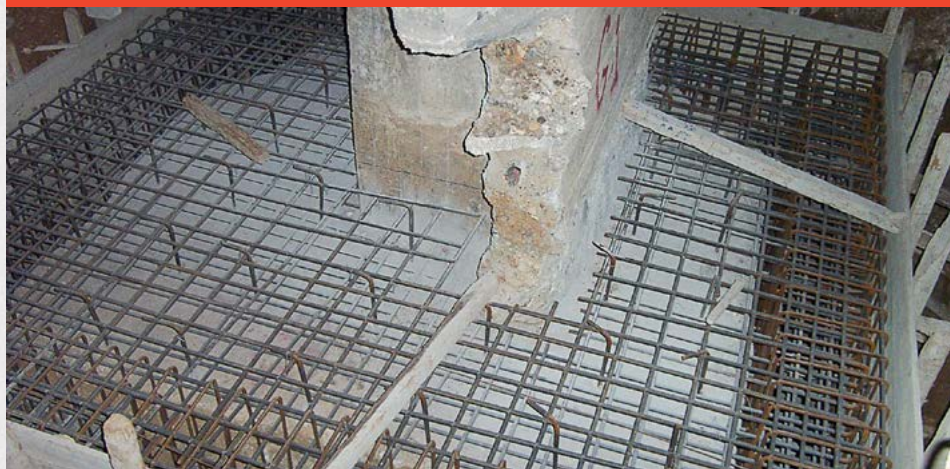




HOTEL INSTITUTION SUPPORTING WITH CARBON FIBER – DAMASCUS – SYRIA



# CONCRETE SUPPORTING – KADMUS – SYRIA



CONCRETE SUPPORTING – SHNAYA – SYRIA



CONCRETE & STEEL SUPPORTING – THEATER - DAMASCUS – SYRIA



STEEL SUPPORTING – ISTANBUL – TURKEY



# STEEL SUPPORTING – DAMASCUS – SYRIA



STEEL SUPPORTING – BURSA – TURKEY



# STEEL SUPPORTING – DAMASCUS – SYRIA

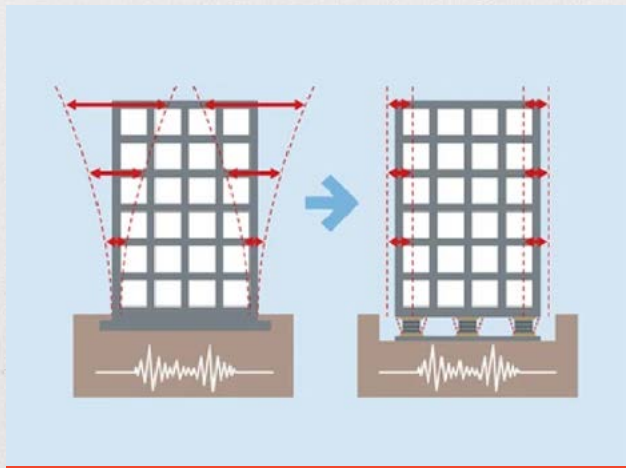
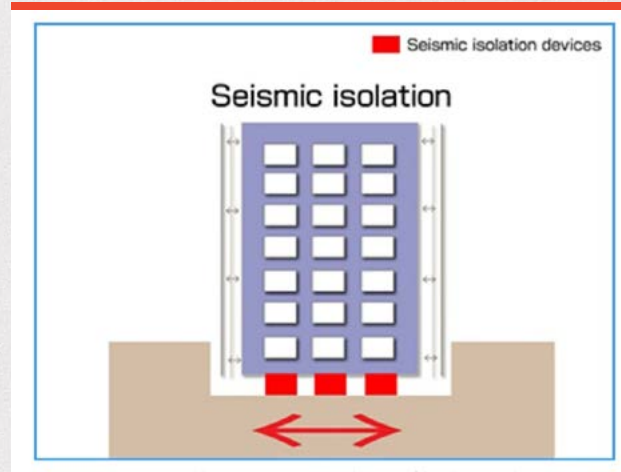




CONCRETE & STEEL SUPPORTING – DAMASCUS – SYRIA



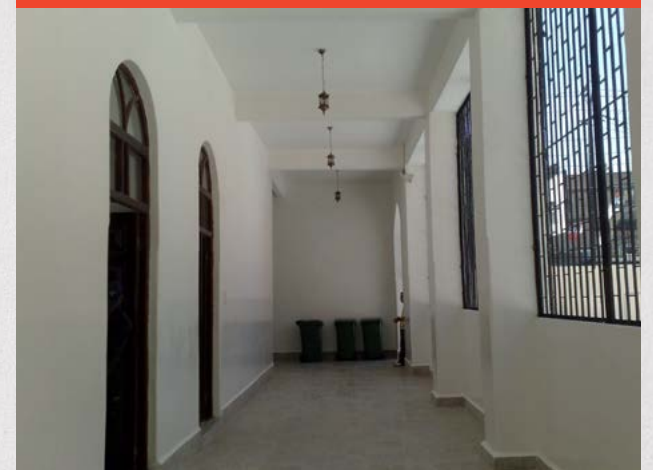
DIFFERENT TYPES OF SEISMIC LOADS SUPPORT SYSTEMS




## REHABILITATION OF 14 SCHOOLS IN THE DAMASCUS COUNTRYSIDE 2008 & 2009



## REHABILITATION OF 14 SCHOOLS IN THE DAMASCUS COUNTRYSIDE 2008 & 2009




# MR. EMAD ALHAJ ALI BEK PERFORMANCE LETTER



Schweizerische Eidgenossenschaft  
Confédération suisse  
Confederazione Svizzera  
Confederaziun svizra

Embassy of Switzerland  
Swiss Agency for Development and Cooperation SDC  
Damascus Office



Schweizerische Eidgenossenschaft  
Confédération suisse  
Confederazione Svizzera  
Confederaziun svizra

Federal Department of Foreign Affairs FDFA  
Swiss Agency for Development and Cooperation SDC  
Swiss Humanitarian Aid Unit SHA

**Performance Reference Contractor**

Project: Rehabilitation and Earthquake Resilience Retrofitting of Four Syrian Public Schools  
Partnership: Swiss Agency for Development and Cooperation SDC & Emad Haj Ali  
Duration: 01.06.2009 to 31.08.2009


We worked with Emad Haj Ali to rehabilitate following schools:


- Jdaidet Artouz for boys – Cycle 2
- Wahbe Wahbe in Jdaidet Artouz
- Bait Sahim High School for girls
- Al-Thawra High School in Babbila

We were very pleased with the results of his labour; he finished the project within the very tight timeline given. The Contractor and his Staff were extremely pleasant to work with and were very professional in keeping the project within the scope of the contract and budget. We were extremely pleased with his work and would give him the opportunity to bid on any other projects that arise in future.

For thus, we wish him the brighten future and lasting successful

Swiss Agency for Development and Cooperation  
Cooperation Office Damascus

  
Jonathan Kuntz  
Project Manager



Swiss Agency for Development and Cooperation SDC  
Cooperation Office Damascus  
147, Douha St. Mezzeh East Vilas  
P.O. Box 5913  
Tel. +963-11-6115406, Fax +963-11-6133463  
E-Mail: damascus@cdc.net  
www.sdc-damascus.net/sy

K:\SDC\_New&S Programmes Projects Activities&S2 Projects\_Activities&S2 4 Syria&S2 415 School Rehab(2009) Contracting\Performance Reference.doc

**To whom it may concern**

SDC Swiss Agency for Development and Cooperation contracted C.V. ENG Emad Alhaj ale and Partners Co. as General Contractor to carry out the following works: Rehabilitation of 14 school buildings and their surroundings in Governorate of Damascus Countryside, from June 5<sup>th</sup> 2008 till September 7<sup>th</sup> 2008.

**Background of the project**  
The congestion of Syrian schools due to a high number of Iraqi students had in 2007 become a general phenomenon in public schools in areas of high concentration of Iraqi refugees, in particular the governorate of Damascus and its suburbs. The congestion in schools had accelerated the rate of deterioration of buildings and had depleted school equipments thus leading to an increase in maintenance cost. This situation limited the capacity to take more Iraqi students, reduced the level of education and led to frequent drop-outs.

**Goal of the project**  
To respond to requirements identified by the Syrian Government to meet the needs in the rehabilitation and extension of existing schools in the governorate of Damascus and its suburbs. In a bilateral agreement between the Syrian Ministry of Education (MoE) and SDC it was agreed to rehabilitate a total of 9 schools hosting 7172 students, 15% of whom are Iraqis.

**C.V. ENG Emad Alhaj ale and Partners Co.**

C.V. ENG Emad Alhaj ale and Partners Co. carried out the following work : normal maintenance / rehabilitation as well as implementing improved elements

The normal maintenance/ rehabilitation included

- Fixing and repairing of doors and windows
- Repairing of basic electrical installations (to ensure a safe environment for students)
- Repair of blackboards and front stages in classrooms
- Tile work in classrooms, as well as in the corridors and playgrounds
- Painting of interior of buildings
- In most of the schools, the sanitation facilities and sewer / rain drainage systems needed to be rehabilitated and/or removed from clogging
- In some schools leaking roofs and/or expansion joints had to be treated
- Plaster work and/or replacement of broken curbs with basalt stone

The improved elements included


- Pilot project for earthquake resistance in one school
- Building a complete new third floor on one of the schools within 3 month time!
- Building of additional sanitation blocks in schools with higher student population
- Provision of canteen and janitor rooms
- Turning deserted backyards into usable playgrounds
- Creating better accessibility for disabled children
- Higher standards on doors, desks, color scheme, drinking fountains, tap protection were implemented.

C.V. ENG Emad Alhaj ale and Partners Co. were strongly reliable partners at any time and fulfilled their entrusted tasks, fast, efficiently and in a high standard of quality.

Thanks to their wide technical knowledge, big commitment and flexible operation SDC was able to carry out the project in a very short time.

We had full confidence in C.V. ENG Emad Alhaj ale and Partners Co. and it's also due to C.V. ENG Emad Alhaj head of C.V. ENG Emad Alhaj ale and Partners Co., personal commitment and prudence, that the project became a full success.

We thank again for the great contribution and wish C.V. ENG Emad Alhaj ale and Partners Co. all the best and good luck for future business!

  
Lorenz Schmid  
Project Manager  
School Rehabilitations Project Syria

# OUR CLIENTS



# INTERNATIONAL OFFICES



## Main Office: UK

Eng. Ali Alhamwia  
2 Plumley Rd, Handforth,  
Wilmslow, SK9 3RR, UK  
uk@artex-group.com  
MOB. +447585393747

## Regional Office: Turkiye

İkitelli OSB, Mah. Bedrettin  
Dalan Blv, Metro 34 Plaza  
Bina No:23, Ofis:53,  
Başakşehir/istanbul, Turkey  
www.artex-group.com  
info@artex-group.com  
MOB +90 530 909 99 50

## Syria Office:

Malas building 2/A  
Yazaji Street, Malki, Syria  
Eng. Mohamad Rashad Alshoweky  
syr@artex-group.com  
MOB +963 93 211 367

   artexeng  company/artexeng

## ARTEX OFFICES WORLDWIDE

### Germany

Eng. Abdul Rahman Durbol  
MOB. +4915147146098  
79189 Bad Krozingen, Germany  
germany@artex-group.com

### UAE

Eng. Abdulbasit Zarzor  
MOB. +971506336905  
33186, Sharjah, UAE  
uae@artex-group.com

### KSA, Jeddah

Eng. Amru Diab  
8232 Prince Sultan st, Jeddah 23414  
MOB. +966 55 0135669  
ksa-jeddah@artex-group.com

### USA

Eng. Bashar Almasri  
MOB. +1 (919) 593-8227  
3920 Lake Ferry Dr., Raleigh,  
NC 27606, USA  
usa@artex-group.com

### France

Eng. Mohy Alzahabi  
MOB. +33616310403  
32 Avenue De Lauterbourg  
Tassin, 69160, France  
france@artex-group.com

### KSA, Riyadh

Eng. Mohamad Akram Almhamid  
MOB. +966 55 590 4663  
ksa-riyadh@artex-group.com  
7726 Ibn Kathir - King Abdulaziz Dist.  
Unit No 130 Riyadh 12233 - 4207 KSA